

---

# KRAS Installation Guide

This guide shows you how to install the KRAS Protocol Template on a Navigator server.

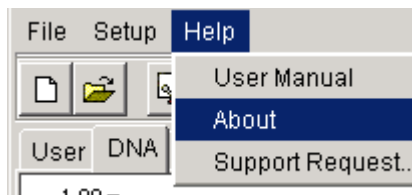
Before You Start . . . . .	1
Installing the KRAS Kit . . . . .	1
Verifying the Installation . . . . .	4



## Before You Start

You must have Navigator database version 2.0 or later installed prior to loading the KRAS kit. Verify the current software version.

- 1 Start Navigator and log in.
- 2 On the menu bar select **Help...About**.

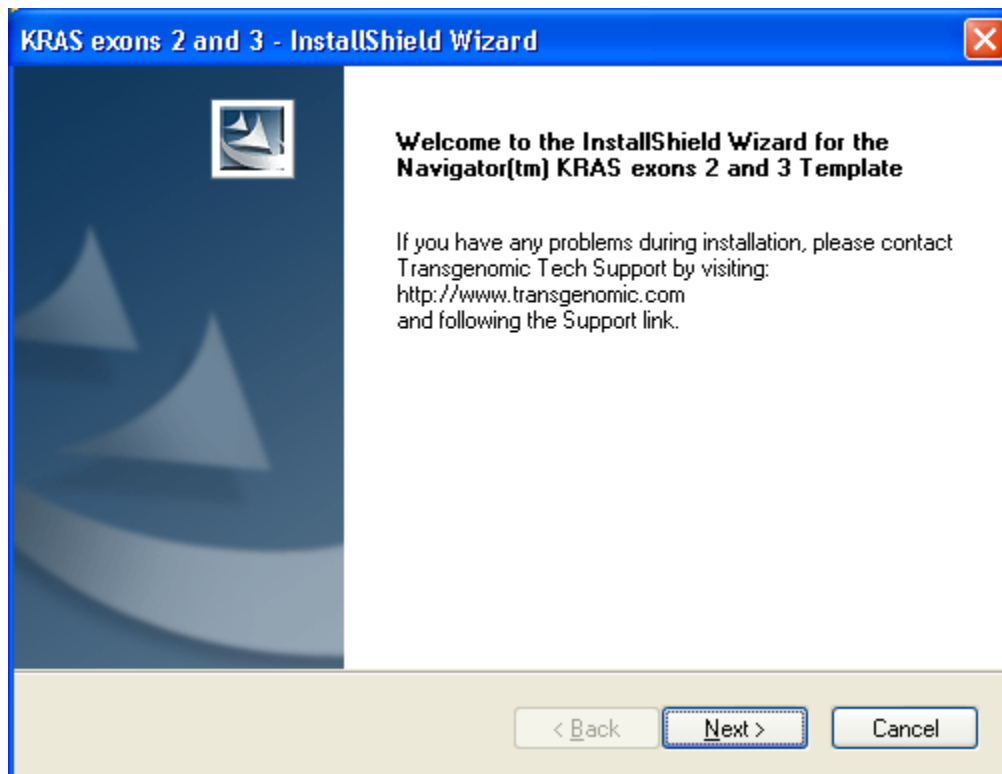


- 3 The About window should show a *Database version* of 2.0 or later. If you have an earlier version, upgrade the Navigator server before continuing the KRAS installation process.

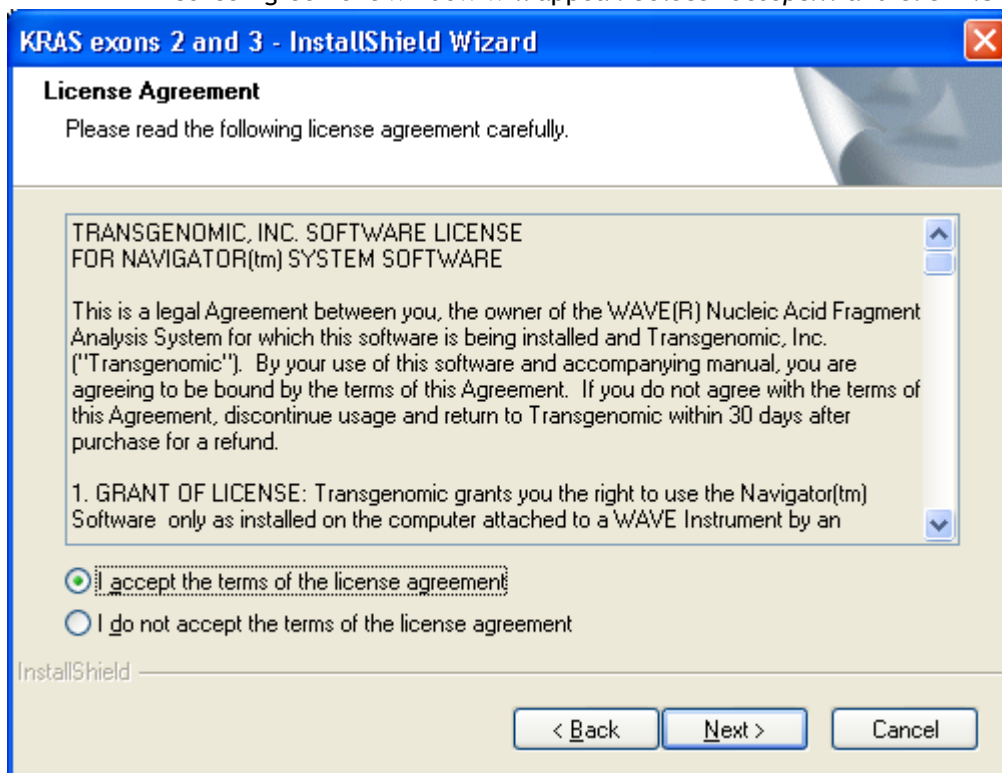
## Installing the KRAS Kit

- 1 Make sure all remote users are logged off.
- 2 Allow the injections in the Queue to complete or flush the Queue and make sure the system is in "standby".
- 3 Close all open applications, including Navint.exe.
- 4 **Restart the computer.**
- 5 Log into Windows as an administrator.
- 6 If any applications start up automatically (esp. Navint.exe), close them.
- 7 Insert the *KRAS Installation* CD into the CD drive.
- 8 On the desktop, double-click **My Computer**.
- 9 Open the CD by double-clicking on the "Navigator (D:)" icon.

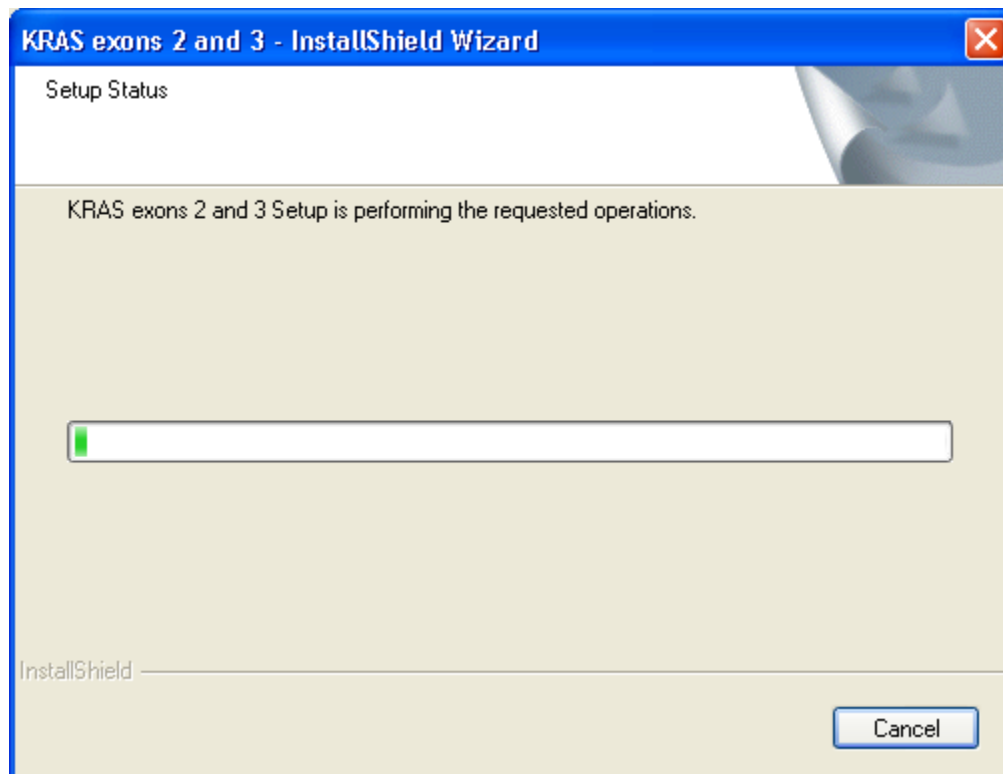
- 10 Double-click the "KRAS.exe" icon. The InstallShield Wizard will start automatically and display the following Welcome screen. Click **Next**.



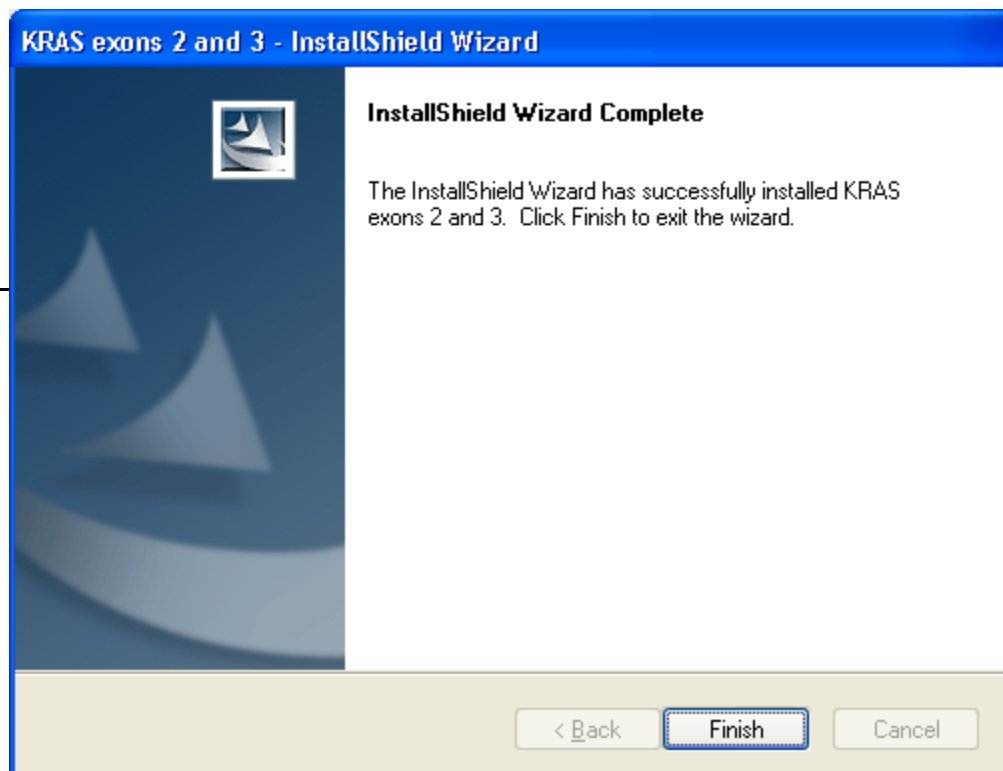
- 11 A License Agreement window will appear. Select *I accept...* and click **Next**.



- 12 The Setup Status window will appear. The status bar will show the installation progress of the KRAS Protocol Template.

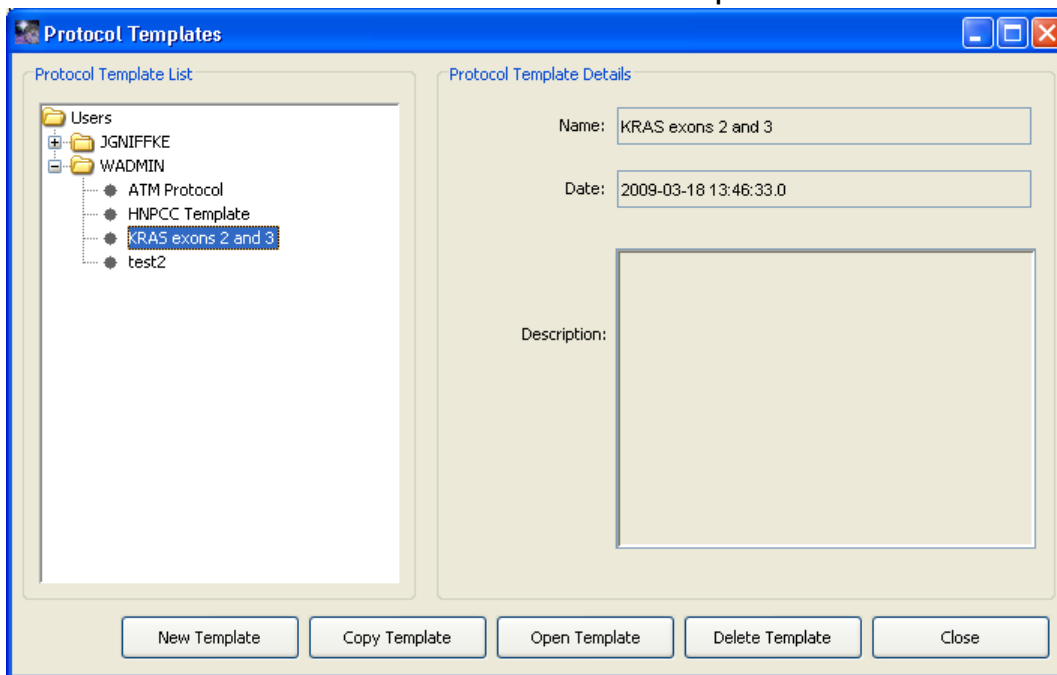


- 13 When the KRAS installation has completed, click **Finish**.



## Verifying the Installation

- 1 Start the client software by double-clicking the Navigator Software icon on your desktop and log in.
- 2 On the menu bar select **File...Protocols...Templates**.



- 3 Verify the *KRAS exons 2 and 3* template has been created.
- 4 For more information on using a Protocol Template see the *Navigator Software Manual*.

If you have trouble installing the KRAS kit, call Transgenomic Customer Support at 888-233-9283.