

WMExporter Installation Guide

Introduction

The WMExporter program is designed to help users migrate data from WAVEMAKER Software to Navigator Software. It is a stand-alone program that can be installed on a Windows machine containing or having network access to WAVEAKER data files. The WMExporter program will scan selected disk drives, prompt the user for selection of appropriate Projects, Methods and Sequences for export, and finally generate data files that can be imported into the database by the Navigator Import/Export utilities.

Prerequisites

1. WMExporter will only migrate data from WAVEMAKER Software Version 4.0 or later.
2. Navigator Software MUST be version 1.5.1a (patch version “a”) or later in order to import data generated by the WMExporter application. The 1.5.1a patch may be downloaded from the Transgenomic website or obtained from customer support.

Installation

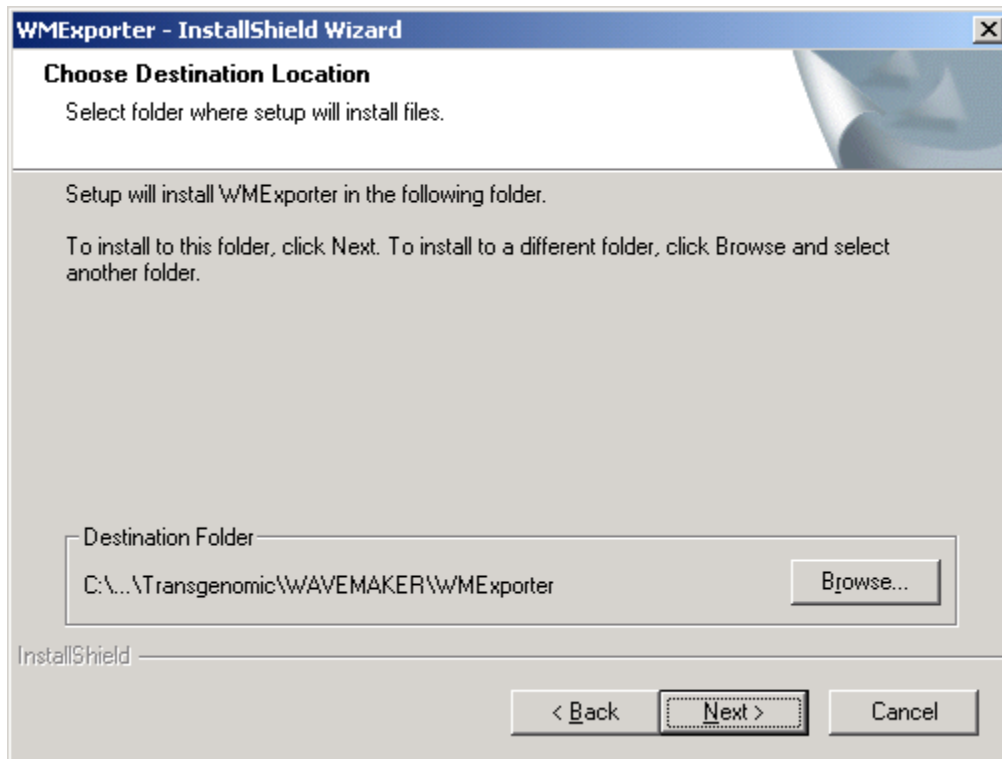
CD-based installation

If the product was obtained on CD, insert the CD and launch the WMExporter.exe file found there to begin installation.

Web-based installation

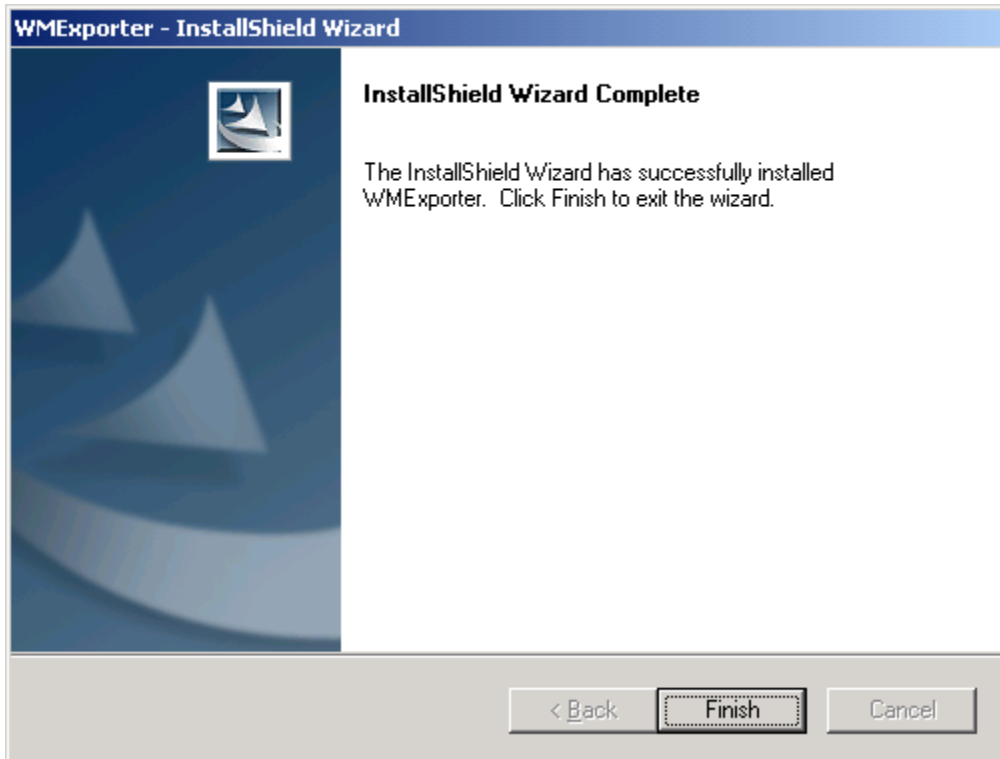
If the product was obtained via the Transgenomic, Inc. website/ftp site, or other means, locate the WMExporter.exe file and double-click to begin installation.

After the initial loading screen, you will be prompted for a path. It is strongly suggested you use the default location provided.



Click Next.

At this point installation is complete and you may click Finish to end the installation program.



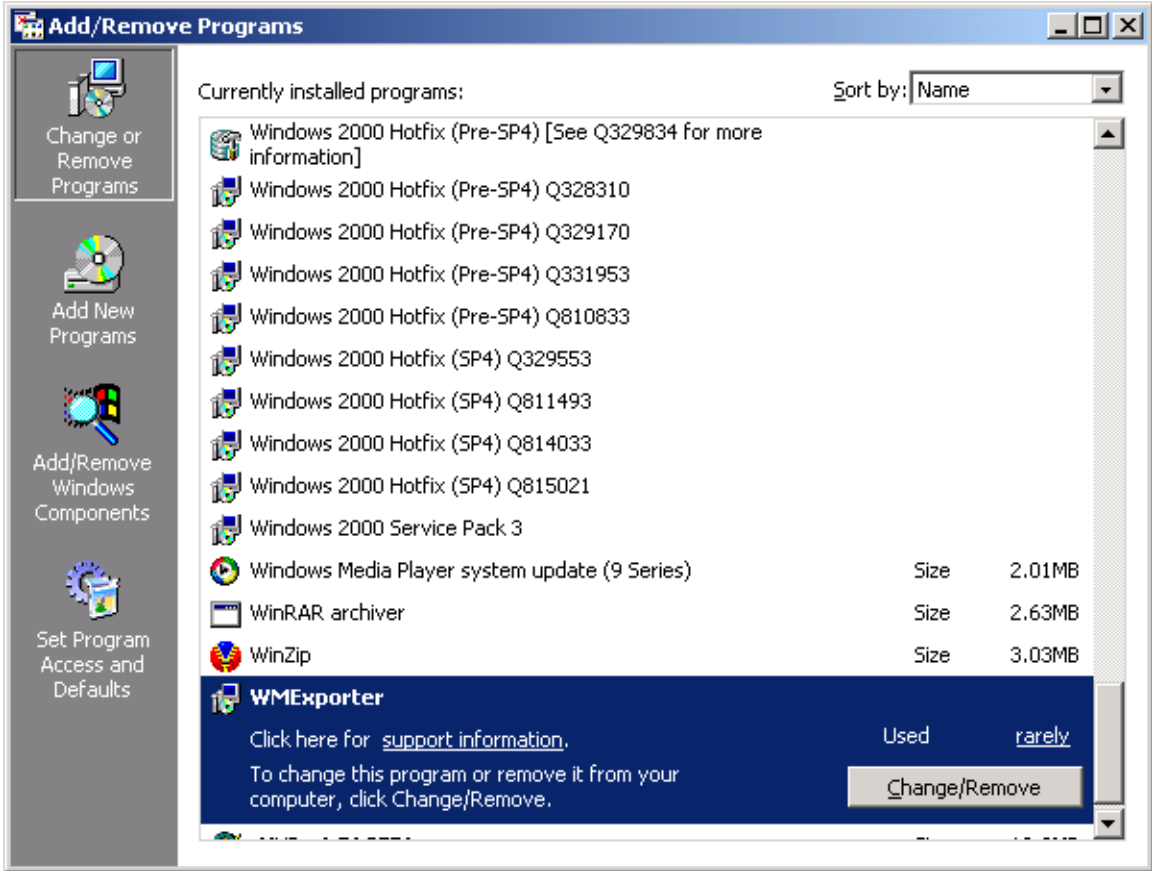
I. Shortcuts

Your desktop will now contain a WMExporter icon for launching the software. In addition, the software can be found in the Start menu by navigating to Programs->WAVEMAKER->WMExporter.

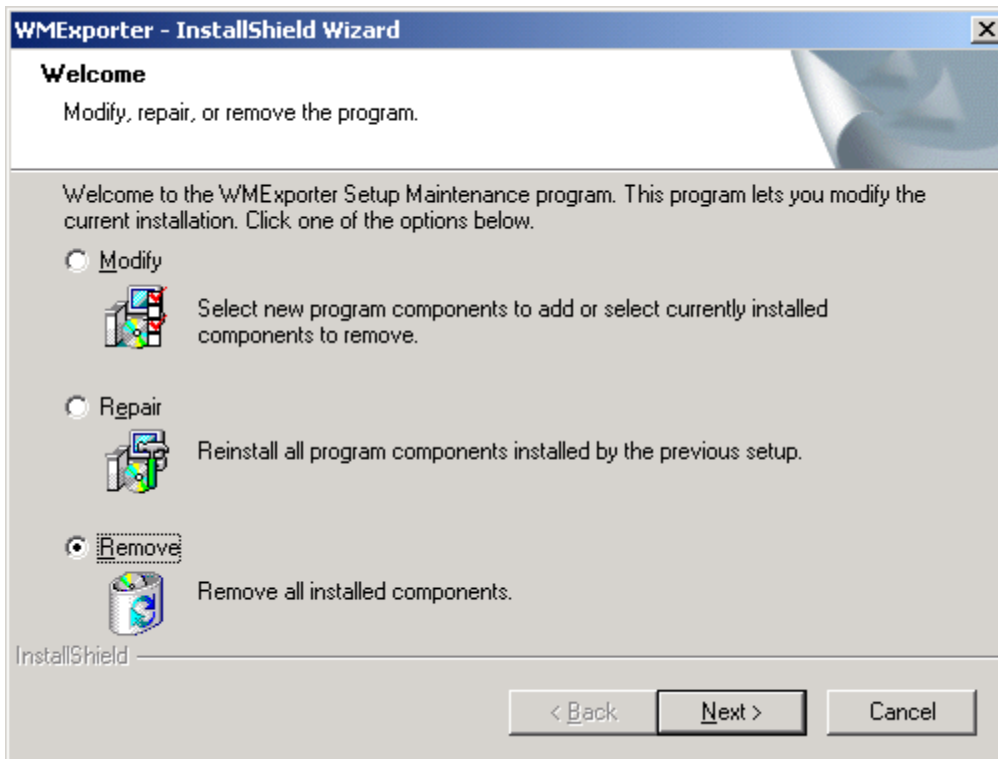
II. Uninstalling

To remove WMExporter from your system, go to Start->Control Panel->Add/Remove Programs.

Locate WMExporter in the list, select it, and click the Change/Remove button.



You will be presented with the options to Modify, Repair, or Remove. Select Remove and click Next.



You will be asked to confirm your choice, and WMExporter will be removed. Click Finish to exit the installer.